

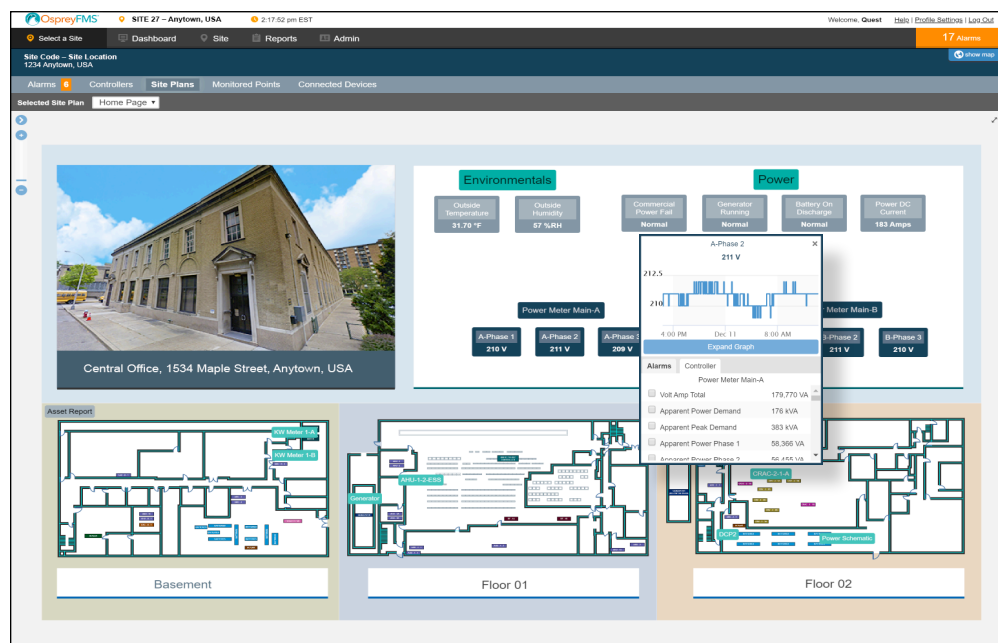
OspreyFMS® – Site Plans & Heatmaps

Intuitive Graphics, Equipment Renderings & Performance Profiling

OspreyFMS Site Plans includes a simple-to-use toolset for graphically representing facilities & equipment with current & historical monitoring data. This, coupled with our *Heatmap* tools, allows users to visually represent data variations, hotspots and trends that historically would have been nearly impossible to see.

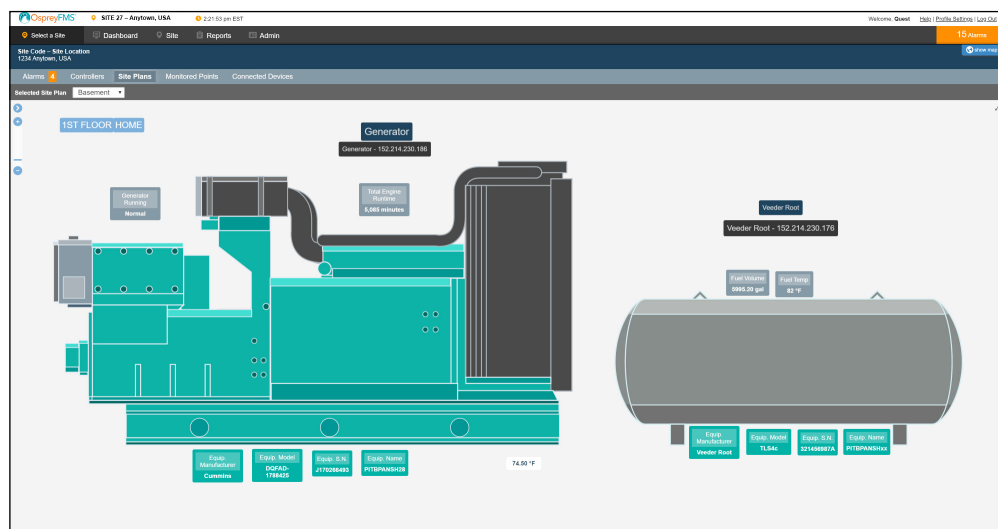
Site Plans

Designed for quick rendering and highly responsive navigation. Easily zoom in and out, view alarms and data.



Equipment Graphics

Support for power & HVAC equipment graphics, including images available within the OspreyFMS library. Data can be overlaid or trigger graphical changes and animations.

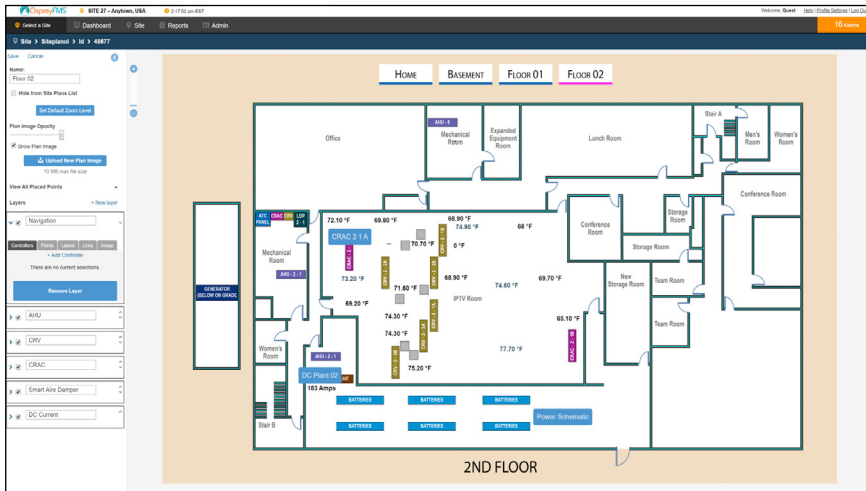


Features at a Glance

- A complete set of tools for creating, modifying and enhancing graphical dashboards for sites and equipment.
- Drag and drop tools for easily including points, controllers, images, titles and links on any graphic.
- Unlimited number of cross-linked plans and graphics.
- Fully articulated tools to actively monitor, view trends and create graphs within the graphics.
- Layers for easy navigation and focus into specific equipment & systems.
- Support for external links.
- Support for graphic changes & animations.
- Support for photos.
- OspreyFMS' open protocol approach allows for multi-system (power, HVAC, etc.) visualizations.
- Customization tools for changing background and font colors and opacities.
- Heatmaps visualize any type of analog point – temperature, amperage, voltage, kw, etc.
- User definable high / low threshold for visualizations.
- Heatmap timeline visually presents changes over time. Users can select a day, week, month or longer at intervals of 30 seconds up to an hour.
- Tool for visualizing the temperatures at different elevations.
- Completely integrated into OspreyFMS.
- Direct data interchange support through the OspreyFMS API and / or SNMP.

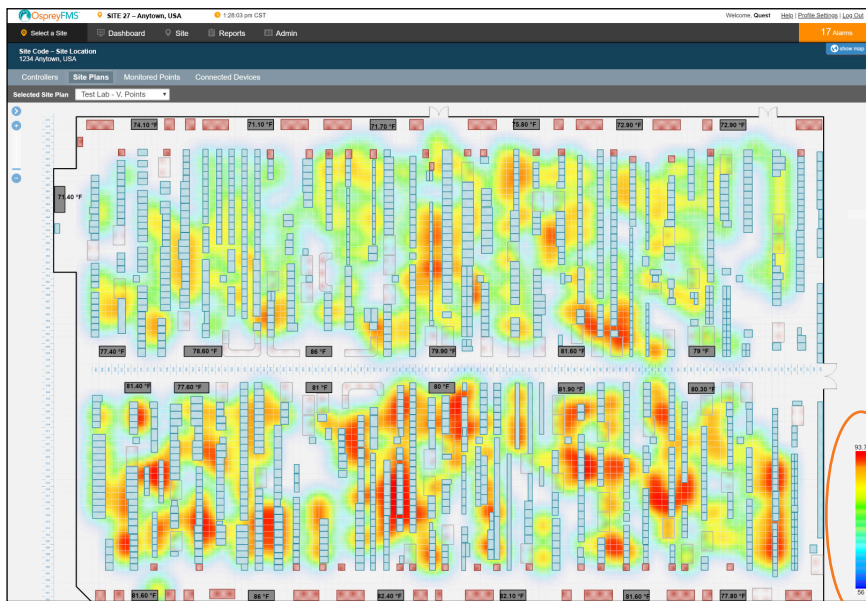
OspreyFMS® – Site Plans & Heatmaps

Intuitive Graphics, Equipment Renderings & Performance Profiling



Tools for Self-Administration

Drag & Drop interface for rapid commissioning and editing. Layering allows for easy presentation options & adjustments.

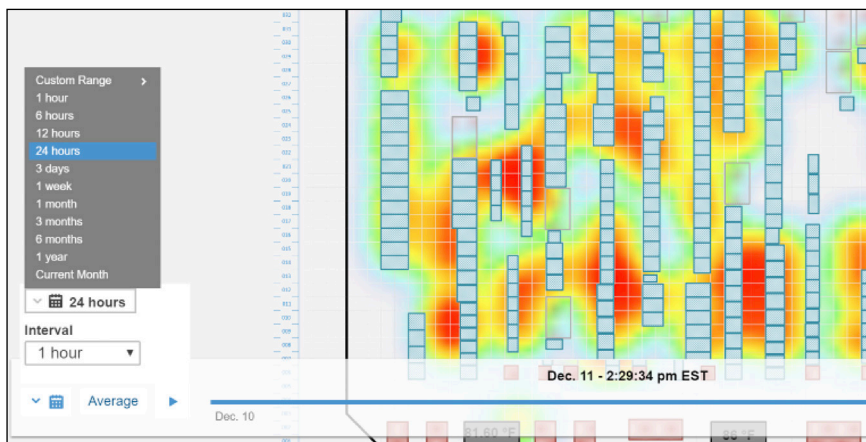


Heatmaps

Graphical representation of data trends as heatmaps.

Detail

Temperature zone



Heatmap Timeline

Instead of viewing the facility at the present moment, the Heatmap Timeline gives users an animated, visual tool that shows the performance of the points over time illustrating hard-to-detect problems and trends.

Quest Controls

208 9th Street Drive West, Palmetto, Florida 34221
(941) 729-4799 • www.questcontrols.com

ofms-sphm 011520 v2

