

# OspreyFMS® – Analytics & Reporting

## Equipment, Site and Enterprise Level Analysis & Reporting

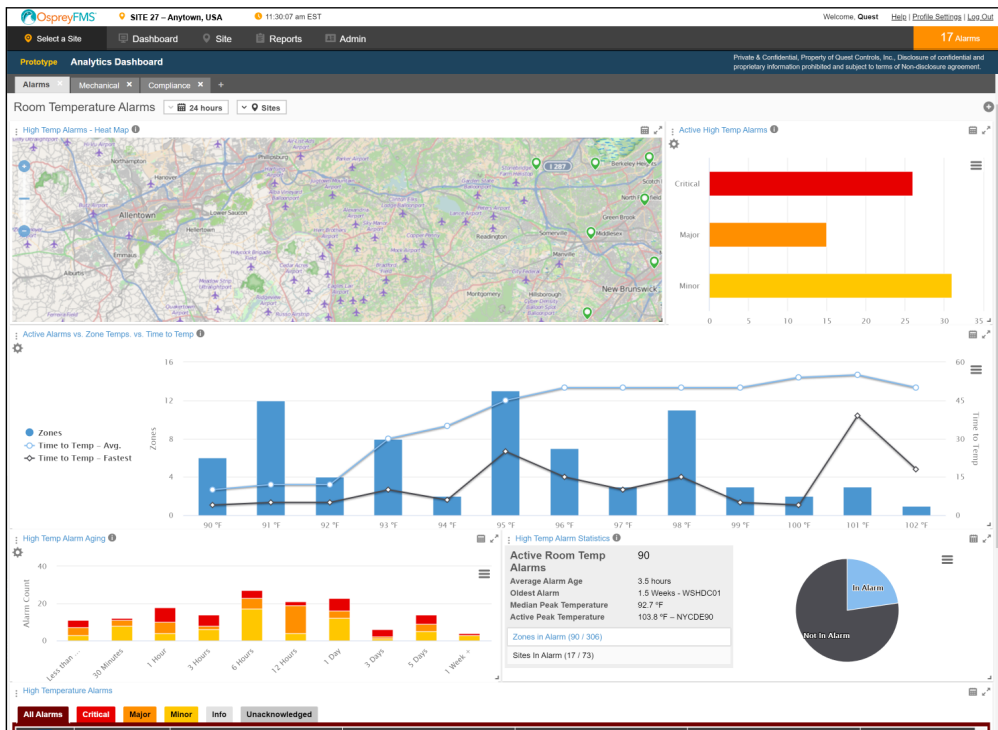
Utilizing the Rapid Render Indexing Engine OspreyFMS unlocks users' data in wholly new ways. Its quick retrieval and nearly instantaneous rendering means that users can now analyze complex data sets and make comparisons that were previously problematic, if not impossible. Reports are available via the web interface as well as distribution as an XLS / PDF / PNG file.

### Robust analytics engine available for creating detailed comparative reports

- Detailed options on KPIs focusing on costs, performance, compliance and targeting.
- Customized dashboards dynamically track specific performance and compliance metrics.
- "Deep Dive" options to remodel and zoom into specific data. Retrieve detailed information about equipment and points.
- Integrated mapping with representative distributions, hover & on-click details.
- Numerous graphing options including pie, scatter, line and bar styles.
- Roll-up summaries of reports.
- Subscription and distribution options.
- Comprehensive tables of included sites and equipment.
- Support for report replication and formatting to adhere to current corporate standards.

### Analytics Dashboards

The OspreyFMS Analytics Engine provides the framework to present KPIs in an easily digestible format, while also providing options to dive deep.

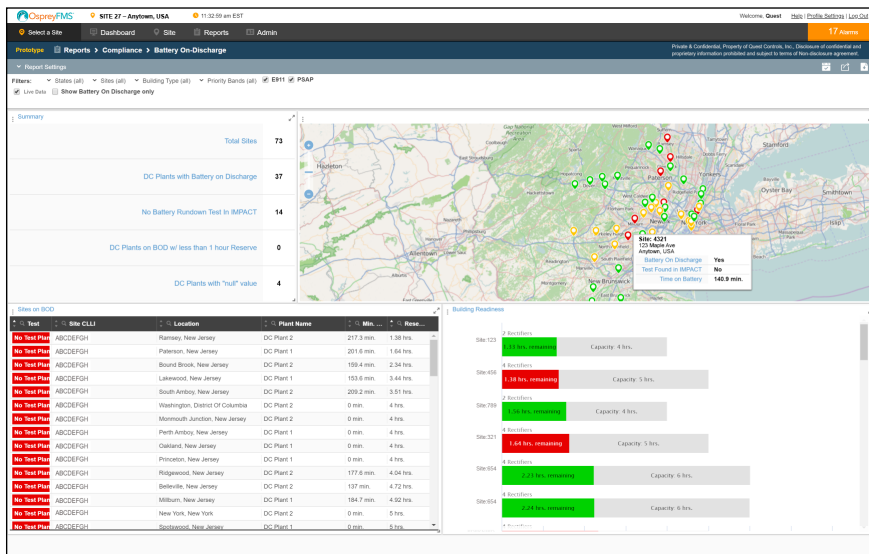


### Features at a Glance

- Set of ready-to-use, web-based reports:
  - Site Trends  
*Multi-system comparative graphs of monitored data over user-defined periods of time.*
  - Ad-Hoc Reports  
*Multi-site comparative data of high / low / average for specific equipment. Options to zoom onto individual equipment performance for the report period.*
  - Alarm Trends  
*Track and search for alarm occurrences by site, equipment, alarm type, severity, name or status.*
  - User Access & Log Reports  
*Track changes with data on user, time, date and nature of the change.*
- User definable date ranges.
- Graphically rich options.
- All pertinent trended data available for any web-based report.
- XLS export option for web-based reports.
- Download option for graphs as PNG, SVG, JPEG or PDF.
- Selection, sorting and search tools to easily manage points and equipment for inclusion.
- Filters for removing unwanted data from the report output.
- Minimum, maximum, runtime and average options for multi-site comparison of different equipment.
- Option to save report configurations for later retrieval.
- Rapid Render Indexing Engine utilized to quickly retrieve & present large datasets.
- Multi-conditional Live Reports provide a table view of monitored data that meets that criteria. Report updates in real-time – dropping points that no longer meet the criteria and adding new points as they are monitored. Options to organize by equipment or site and filter out faulty sensors and / or readings.

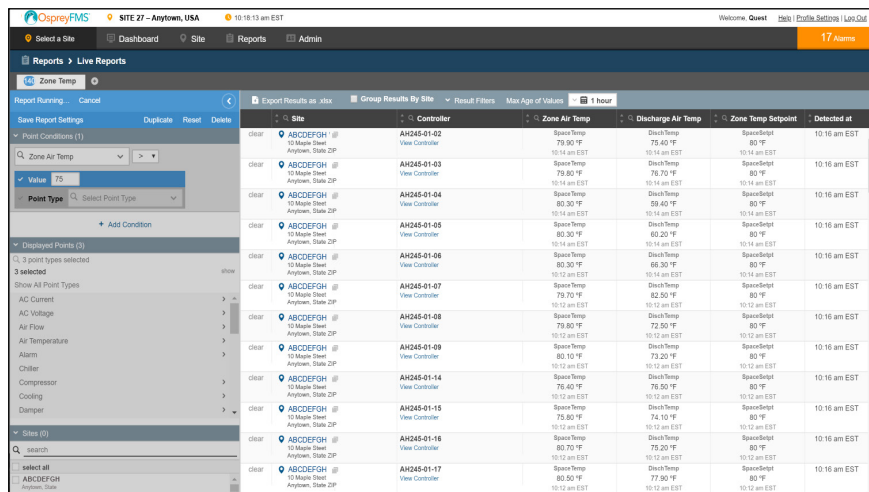
# OspreyFMS® – Analytics & Reporting

## Equipment, Site and Enterprise Level Analysis & Reporting



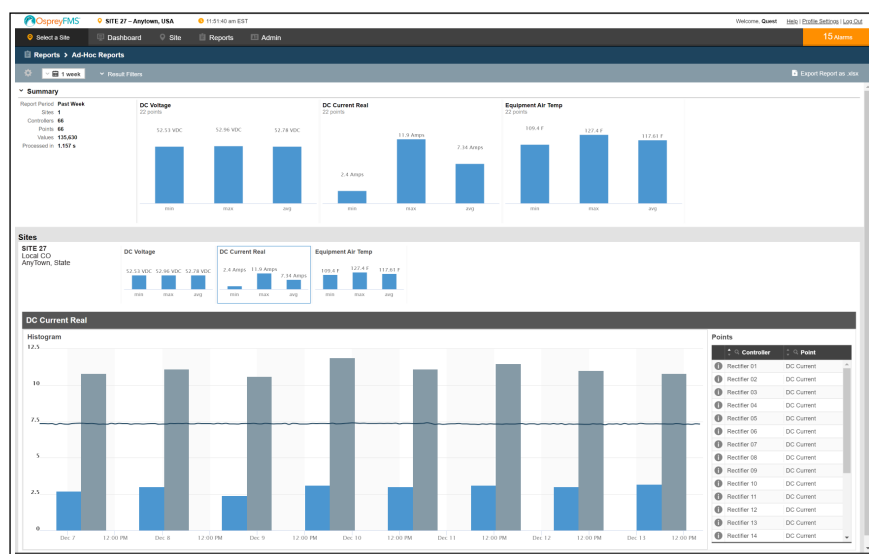
### Business Specific Reports

Rather than a one-size-fits-all report option, OspreyFMS can distill, compile and analyze data to present it to business specific requirements. As with all OspreyFMS reports, there is an emphasis on providing technical details while also making it suitable for management distribution.



### Live Reports

Reports by their nature are traditionally trapped in time. The unique OspreyFMS Live Reports let you develop the report criteria and view it in real-time. Sites and equipment are dynamically included or not included as it meets or does not meet the defined criteria.



### Highly Responsive Trend Reports

Sometimes just digging through history is all that's needed. The web-based trend reports are intended as easy-to-use tools for quickly accessing histories and presenting them in a fashion to understand current issues.

### Quest Controls

208 9th Street Drive West, Palmetto, Florida 34221  
(941) 729-4799 • [www.questcontrols.com](http://www.questcontrols.com)

ofms-a 120219 v1

