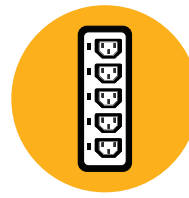
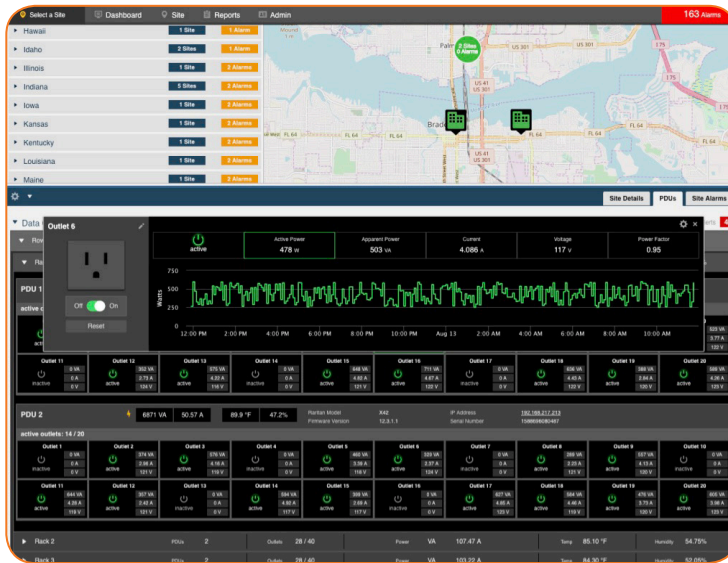


# Power System Management

## Superior monitoring & alarming of PDUs, DC-Plants & UPSs



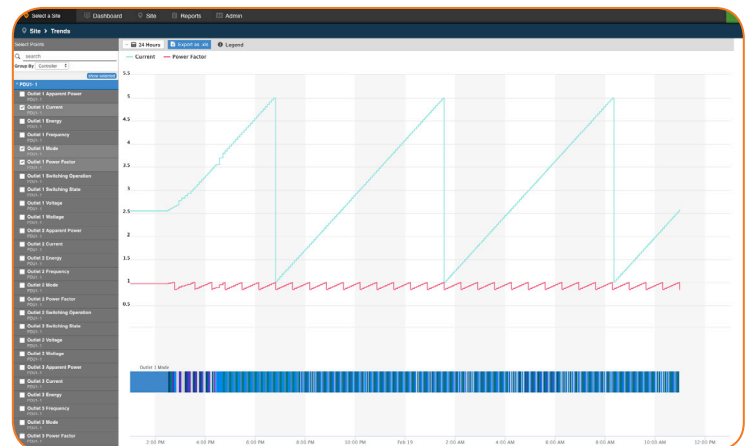
The OspreyDCM platform is the next gen approach to monitoring & managing large volumes of power equipment, whether PDUs, DC-Plants or UPSs through a streamlined, intuitive interface. OspreyDCM's greatest asset is its focus on presenting easy-to-decipher real-time critical data without overwhelming the user. Through OspreyDCM's unique approach, users can expect increased uptimes, workload reductions, operational clarity and increased serviceability.



## Graphical Representation

OspreyDCM provides a suite of drag and drop tools for designing graphical representations of your building and elevations for racks and rows.

- Automated hierarchies with roll-up values & alerts at each tier
- Support for unlimited drawings, photos, renderings and points
- Automated adjustments to your plans based on defined groups & equipment



*OspreyDCM rolls up your data at the portfolio, building, room, row or equipment level to effectively anticipate what you want to see. By tailoring each tier to a specific focus, it allows for increased engagement and a more compelling overall experience. Monitoring can be pleasant.*



### Hardware Agnostic

Through a robust library of manufacturer options, connect directly to almost any power system through our auto-discovery tools. And if your SNMP communicating PDU, DC-Plant or UPS is not in our library – we'll get it integrated for your project, guaranteed.

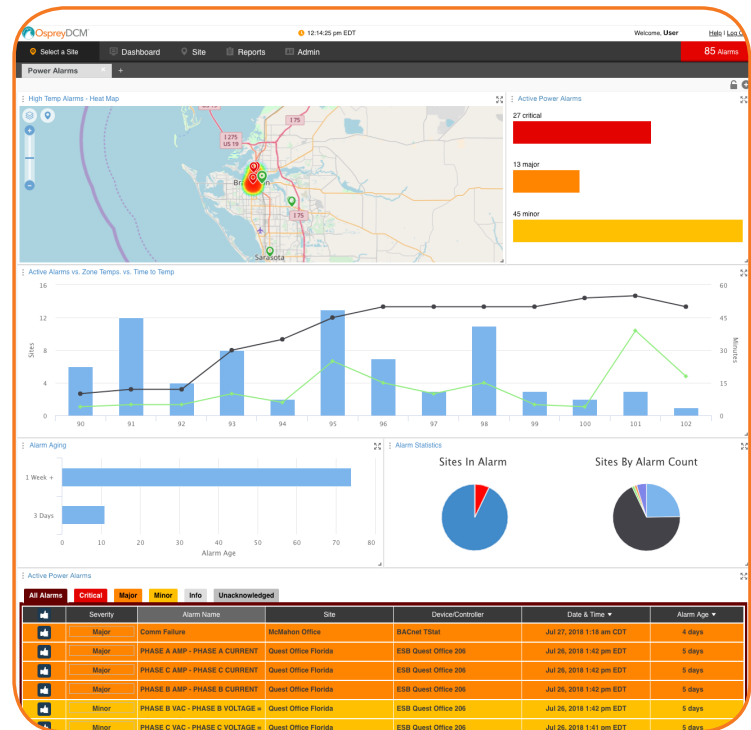
- **BACnet, Modbus and MQTT protocols available as options**
- **Environmental, HVAC and other system support available through OspreyFMS module**

### Self-Administration

All the tools, all in one place. No need to contract out help – configuring a piece of equipment is as easy as selecting it from a drop-down.

- **Auto-discovery tools for commissioning your equipment in five minutes or less**
- **Advanced configuration options for refining settings and aliasing equipment & points**
- **All tools are visually based and available directly within OspreyDCM**

Feature	OspreyDCM	Others
Centrally-hosted, server-based software	•	•
Auto-discovery of equipment	•	•
Web-based tools for customizing and commissioning all equipment & sites	•	•
Unlimited users	•	•
Unlimited sites	•	•
Unlimited points per equipment	•	•
Large library of manufacturers and models	•	•
Customizable dashboards	•	•
Web-based reports	•	•
Available API for data interchange	•	•
Multiple hierarchal tiers for easy automatic organization and management	•	
Unlimited site plans	•	
Auto-rendered rack elevations & groups	•	
Dashboard level timeline and graphs	•	
Integrated, configurable equipment-level alarm thresholds	•	
Advanced multi-conditional software-level alarm polling	•	
Option for BACnet, Modbus and MQTT supports	•	
Upgrade path for integration into facility monitoring (HVAC, generators, etc.)	•	
Alarm header and reports	•	
Configurable polling cycles	•	



### Alarm Monitoring

Quest Controls has built their company on offering the most robust options for alarming. OspreyDCM leverages much more sophistication out of customized messaging, unlimited alarm trigger conditions and numerous delivery options.

- **Options for SNMP TRAP filtering or utilizing OspreyDCM as an alarm poller**
- **Unlimited number of alarm conditions including multi-site event criteria**

### OspreyDCM App & API

Your collected data increases in value when it is available to other software and systems.

- **Osprey API allows for easy data interchange with current and future applications**
- **Android & iOS apps increases flexibility of when & how you engage the data**

### Low Cost to Entry

Available as both a one-time license or subscription option, our best-in-industry pricing gets the streamlined features of OspreyDCM into your enterprise quickly and efficiently.