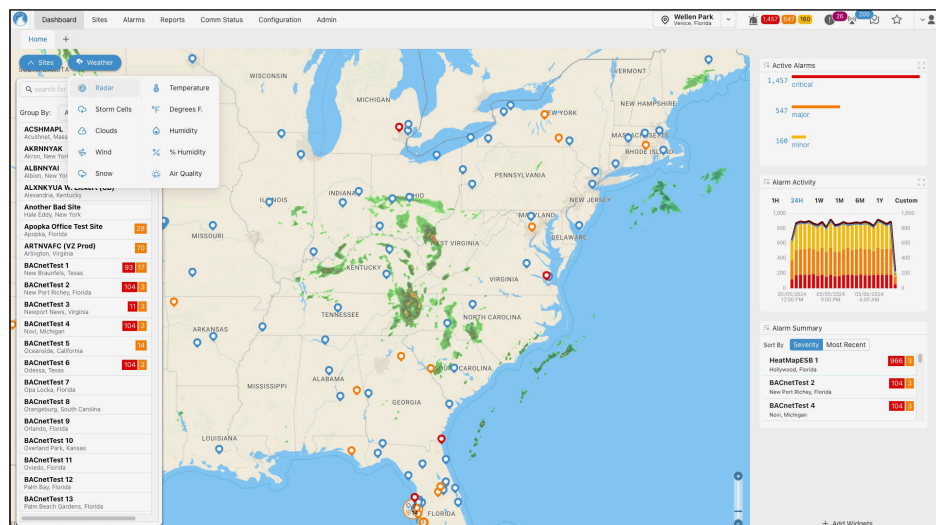




**OspreyCloud™** is the on-demand version of the established Osprey-FMS® software, offering all its functionalities while requiring only lightweight software agents for device communications, deployable at the edge or in facilities—no proprietary hardware or complex software installs needed. This cloud-based service allows users to access and manage their data from anywhere with an internet connection, increasing flexibility and accessibility. OspreyCloud ensures business continuity and simplifies disaster recovery, as your data is securely stored off-site.

OspreyCloud™ is designed to unify disparate control systems into a single, intuitive interface. Its powerful dashboard enables real-time monitoring, advanced alarm management, and in-depth data analysis across multiple sites. With features such as integrated maps, customizable visualizations, trend reporting, and predictive analytics, OspreyCloud™ provides users with actionable insights that help identify cost savings, anticipate equipment failures, and maintain operational efficiency. The system supports SNMP, BACnet, Modbus, and other industry-standard protocols, offering hardware-agnostic compatibility and seamless integration with existing infrastructure.



*OspreyCloud Dashboard with Weather Radar Overlay*

## BENEFITS

### Hardware-Free

Tap into OspreyFMS's power—heatmaps, alarms, trending—directly via browser.

### Anytime, Anywhere Access

Mobile-ready. Work from the field or remote office.

### Enterprise Insights

Multi-site dashboards for cross-facility analysis and cost tracking

### Rapid Reporting

Real-time, live and historical reports; XLS/PDF outputs; searchable trends

### Secure & Compliant

Role-based permissions, audit logs, user change tracking

### Seamless Integration

Supports SNMP, BACnet, Modbus, REST & all major protocols





## FEATURES

### Interactive Dashboards & Heatmaps

Choose from customizable dashboards, floor plans, geo-maps, and heatmap animations with weather overlays

### Alarming & Notification

Configure advanced, multi-condition alerts—grouped by priority, equipment, or site—with filterable alarm histories

### Analytics & Reporting

Powerful trend and analytics engine generates enterprise-wide and site-specific insights, live updates, and light-speed rendering

### Global Management

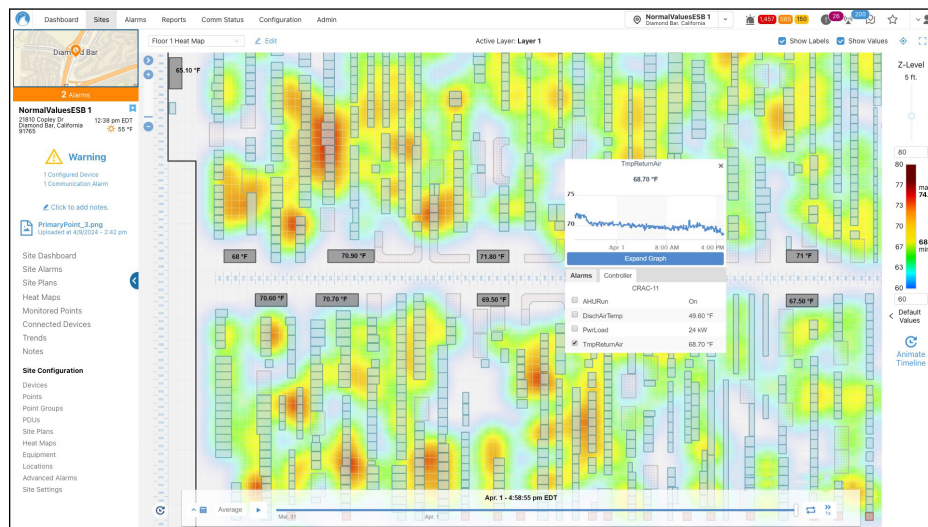
One platform to monitor and manage all sites. Roll out settings and dashboards across your portfolio instantly

### Scalable Cloud Architecture

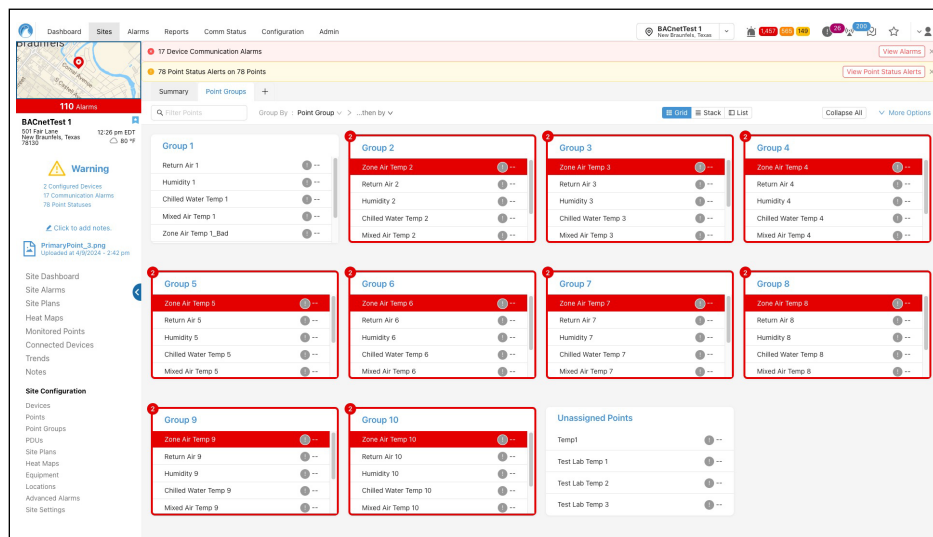
Built using cloud-native best practices: containerized, high-availability APIs, fast data indexing—designed for future growth

### Edge Intelligence & Resilience

Supports monitoring, control, SNMP trap handling, and comm loss alarms at the edge—maintaining critical operations even without cloud connectivity



Site Plan Heatmap



Site Dashboard with Alarms

## Experience the Future of Facility Management

OspreyCloud delivers the full power of Quest Controls' proven monitoring and control technology—without the burden of on-site hardware or complex installations. Whether you're managing a single facility or a nationwide network, OspreyCloud offers the visibility, intelligence, and scalability needed to drive smarter decisions and maintain uptime across your operations. Ready to streamline your infrastructure management? Connect with Quest Controls today and bring the cloud to your critical facilities.