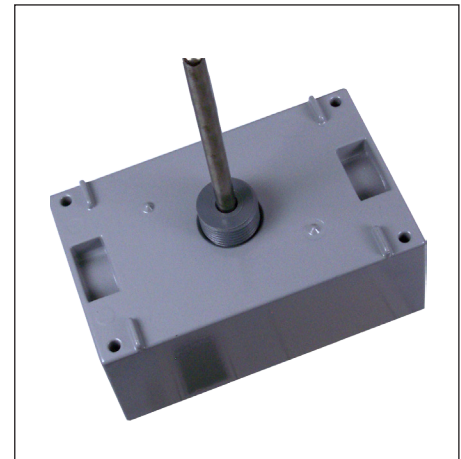


# Supply Air Temperature (thermistor) Sensor

ESd@g\_TW300199  
AT&T Item Number: BLD.10579

## Overview

The Quest Supply Air Temperature (thermistor) Sensor is designed to provide accurate and reliable readings of the temperature inside air ducts. The sensor is typically installed in the supply air duct of an HVAC system for control and performance analysis. The sensor has an 8" probe length and comes mounted to an electrical box for wire terminations. This sensor can be used with the TELSEC® product family as part of an overall energy management control solution.



## Specifications

**Part Number:** 300199

**Output:** 10K Ohms @ 77°F (25°C) Type III Thermistor

**Interchangeability:**  $\pm 0.2^{\circ}\text{C}$  (0 to 70°C)

**Accuracy:**  $\pm 0.2^{\circ}\text{C}$

**Stability:**  $\pm 0.13^{\circ}\text{C}$

**Operating Humidity:** 0 to 90% RH non-condensing

**Temperature Range:** -40 to 302°F (-40 to 150°C)

**Dimensions:** 4" W x 9.7" H x 2.6" D (102 x 246 x 66 mm)

**Weight:** 0.5 lb. (227 g)

**Warranty:** 90 days

*Specifications subject to change without notice*

[www.questcontrols.com](http://www.questcontrols.com)

Tel: (941) 729-4799, Fax: (941) 729-5480

208 9th Street Drive West, Palmetto, Florida 34221

