

TELSEC® ESB2x

for Monitoring, Control & Building Management of Remote Sites



**ENVIRONMENTAL ALARM
MONITORING & CONTROL**



**GENERATOR & ATS
MONITORING**



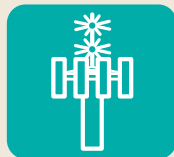
**INTELLIGENT LEAD/LAG HVAC
MONITORING & CONTROL**



**AC/DC POWER &
UPS MONITORING**



**TELEPHONY
EQUIPMENT MONITORING**



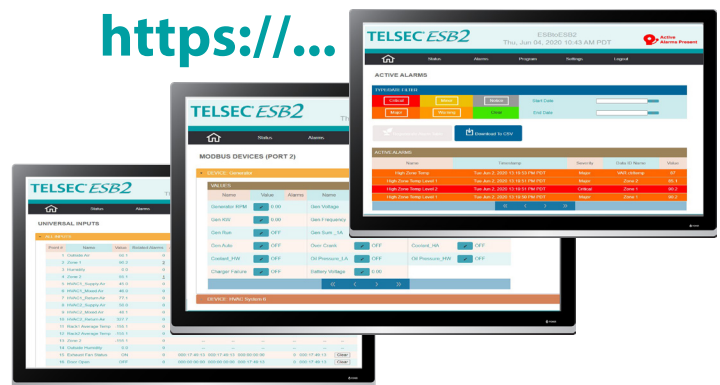
**TOWER LIGHT
MONITORING**

Timestamp	Severity	Description	Value	Status
8/10/19 16:35	Critical	Zone 1 High Temperature	83.6	Active
8/10/19 16:30	Minor	Low Humidity	12.3	Active
8/10/19 15:26	Major	HVAC 1 Failure	ON	Active
8/10/19 15:10	Critical	Generator Running	ON	Active
8/10/19 11:15	Notice	HVAC 1 Bypass	ON	Active

TELSEC® ESB2x with Color
LCD Touch Screen



<https://...>



The TELSEC® ESB2x incorporates all the benefits of the standard ESB2, plus allows custom configuration to house two expansion boards in the same enclosure to reduce space and installation time:

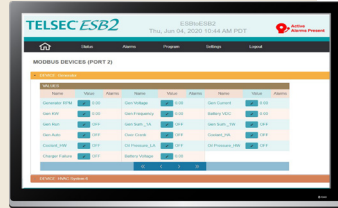
- Performs all controlling, monitoring, and communication functions in a single product.
- Install in CEVs, CUEs and Cabinets.
- Install in COs and Data/Computer Centers.
- Uses Quest's patented economizer control algorithm to dynamically adjust settings to optimize the use of outside air for cooling.
- SNMP, embedded Web Server, and Email Alarm Messaging.
- Compact, versatile package operates with a standard control program or can be customized to meet your requirements.
- Enables interrogation of remote sites from any alarm and/or maintenance center.
- UL and CE listed. Mountable in customized UL approved Panel Enclosures.
- Optional upgrade kit to update an existing ESBx System.

Acting as your smart eyes and ears, the TELSEC® ESB2x delivers large savings and quick payback by:

- Reducing energy costs via intelligent HVAC lead/lag control strategies.
- Reducing visits to remote sites.
- Eliminating downtime by acting as an early warning system.
- Reduce capital expenditures by replacing multiple devices to accomplish the same task.
- Extending life of critical operating equipment including air conditioners, generators and power equipment.
- Providing remote visibility and 2-way communications.

TELSEC® ESB2x Features:

- Ethernet connectivity with support for SNMP v1, v2c, v3 & secure Web server (HTTPS).
- Expandable to 272 universal inputs, 144 digital outputs and 66 analog outputs plus 16 standalone HVAC controllers.
- Controls multiple air conditioning units for fan, cooling, heat, and economizer through optional Intelligent standalone Controllers.
- Uses Quest's patented economizer control algorithm to dynamically adjust settings to optimize the use of outside air for cooling.
- Supports polling and alarming of 1024 registers for Modbus RTU slave modules.
- Converts Modbus RTU data to SNMP for remote polling and alarming of devices.
- Non-volatile FLASH memory prevents program loss & stores program upgrades.
- Monitors all environmental alarms: temperature, humidity, fire/smoke, toxic and combustible gas, high water.
- Built-in color LCD touch screen for system status and setpoint changes.



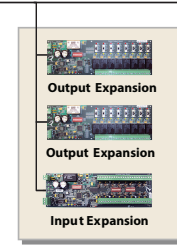
Secure Web-based Communications



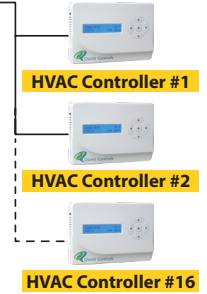
HTTPS, SNMP and SSH over Ethernet



TELSEC® ESB2x



EXP Expansion Panel*



* Up to 3 TELSEC® ESB2x Input/Output Boards can be mounted in an Expansion Panel

Specifications	TELSEC® ESB2x	EXP Expansion Panel	UIB Board	DOB Board	AOB Board	HVAC Controller
Part Number	151085	150775 requires External Power Supply	130455	130454	130456	150966-5
Mounting	Wall mount					
Inputs	16 universal inputs expandable to 272 in 16 input increments, Analog (0-5 VDC or 0-20 mA) or dry contact closures (order part# 130455)					
Outputs - Digital	16 digital outputs expandable to 144 in 8 output increments, (order part# 130454)					
Contact Rating	(16) Form A, 1 amp at 30 VDC, 0.3 amps at 60 VDC, 0.5 amps at 125 VAC, (order part# 130454) (8) Form C, 10 amps at 28 VDC, 8.5 amps at 120 VAC					
Outputs - Analog Optional	2 on-board, expandable to 66 in 4 analog output increments, 0-10 VDC or 0-20/4-20 mA (order part# 130456)					
HVAC Control	16 standalone HVAC Controllers can be networked to the system. Order part# 150966-5					
Power	24 VAC/20-60 VDC, current draw 0.5 amps at 24 VDC					
Front Panel	Color Touch Screen LCD 4.3" diagonal with 24-bit TrueColor. WQVGA resolution (480 x 272)					
Serial Network Options Supported	Three RS485 ports Modbus RTU & Quest expansion modules					
Network Interface (option) LAN Protocols Supported	Ethernet 10/100BaseT with RJ45 connector IPv6, IPv4, HTTP, HTTPS, RADIUS Password Authentication, NTP, SMTP (email), SSHv2, Telnet, SNMP v1, v2c and v3 for Gets, Sets and traps/informs					
I/O Terminals	2 piece pull-off terminals for all field wiring					
Battery	Long life lithium: 10 year shelf life, 1.5 years under load					
Temp/Humidity Sensor Accuracy	Temp: ±1°F (±0.5°C), Humidity: ±2% of range. Temperature & Humidity sensor (standard)					
Ambient Operating Temp	-20 to 180°F (-29 to 82°C), 0-95% RH Non-condensing					
Certification	UL, cUL, FCC 47 CFR Part 15B, ISED ICES-003 Class A					
Dimensions	15.25"W x 22"H x 3.56"D (387 x 559 x 91 mm)					
Weight	22 lb. (9 kg)					
Warranty	1 year					

For use under U.S. Patent No. U.S. 10,267,529 B2 when component is part of a patented combination
Specifications subject to change without notice



www.questcontrols.com
Tel: (941) 729-4799, Fax: (941) 729-5480
208 9th Street Drive West, Palmetto, FL 34221